

Cashmaster[®] **connect**

installation guide



Document information

Date: 30 October 2017

Document ID: 10585A

Contact

Cashmaster International Ltd.

Dunnottar House

Unit 6 St David's Drive

St David's Business Park

Dalgety Bay, Fife KY11 9PF

Scotland, United Kingdom

cashmaster.com

Copyright

Copyright © 2017 Cashmaster International Ltd - All Rights Reserved.

Other product and company names may be trademarks or registered trademarks of other companies, and are the property of their owners. They are used only for explanation, without intent to infringe.

Intended purpose

This document is provided for Cashmaster Connect users and describes how to install the Cashmaster Connect product.

System Requirements:

- USB 'A' to USB 'B' cable
- Windows XP, Vista, 7, 8, 8.1 or 10
- Microsoft DotNet Framework V4.0 or above

Recommended: Internet connection for product activation & software updates (manual activation also available)



Warning

Please do not connect your Cashmaster product to your PC until you have completed the following installation steps.

1 Installation steps

Notice

Please note: the installer requires administrator privileges – contact your system administrator if you do not have administrator-level user rights on your PC.

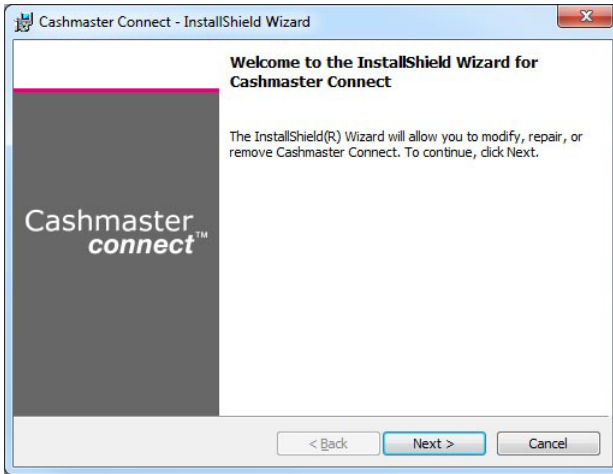
- 1.1** Double-click the 'Cashmaster_Connect_Setup.exe' file.



- 1.2** The Windows 'UAC' dialogue may appear. Click 'Yes' to continue.



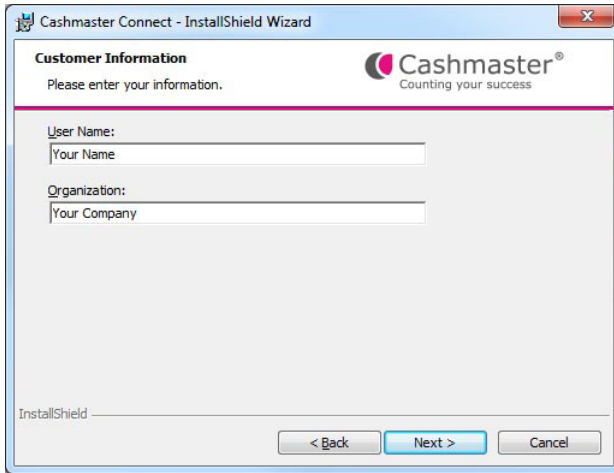
1.3 Click 'Next' to continue:



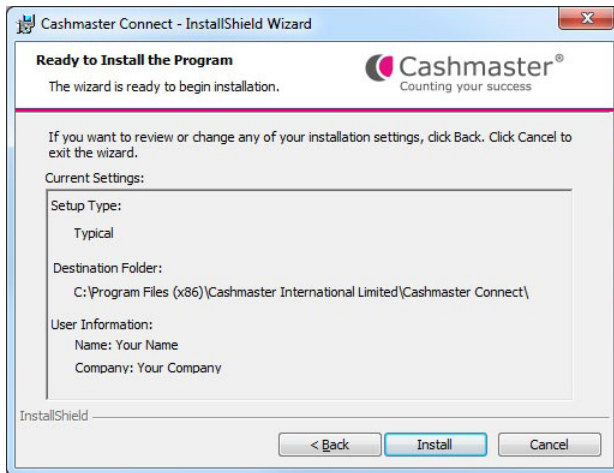
1.4 Accept the standard license agreement to continue:



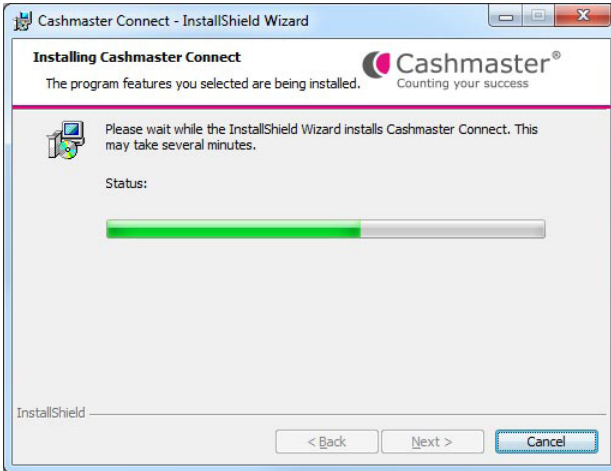
1.5 Enter your user name and organisation to continue:



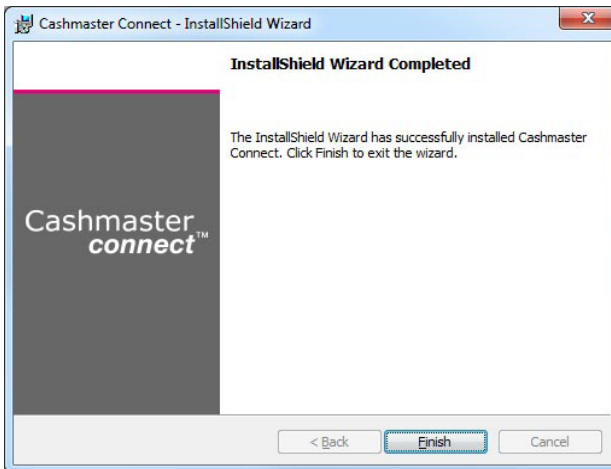
1.6 Review the installation settings, then click 'Install' to continue:



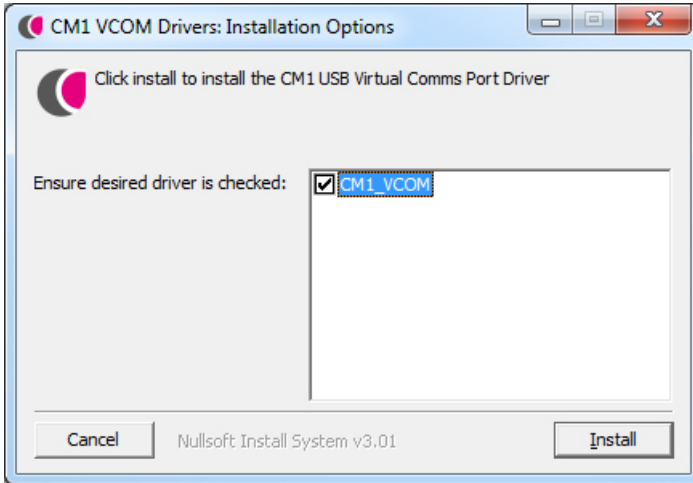
- 1.7** The installation process will begin. There may be a short pause before you see progress:



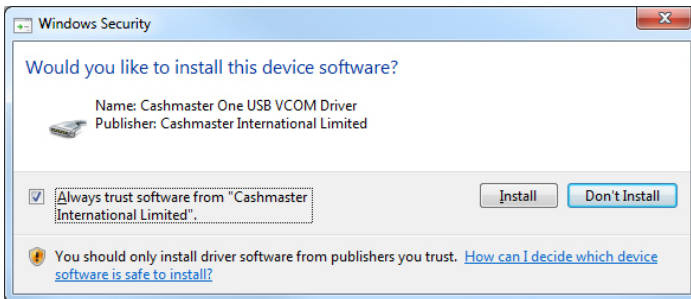
- 1.8** After a few moments, the installation of Cashmaster Connect will complete – click 'Finish' to continue:



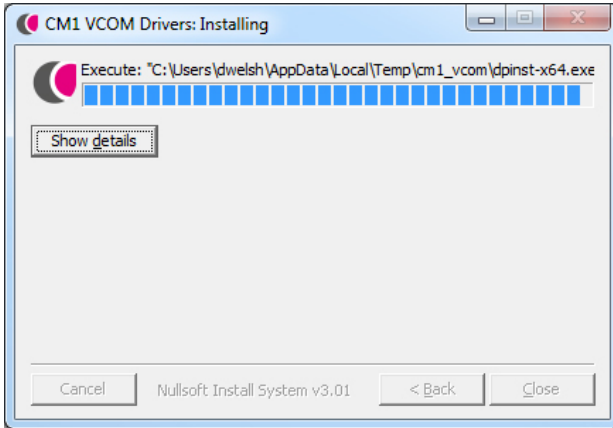
- 1.9** Immediately after the Cashmaster Connect installer has completed, the Cashmaster One 'VCOM' Windows driver installation process will automatically begin. Click 'Install' to proceed.



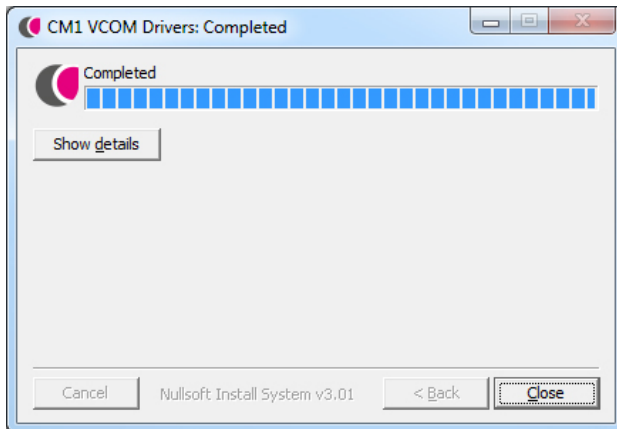
- 1.10** The Windows 'UAC' dialogue may appear. Click 'Yes' to continue.



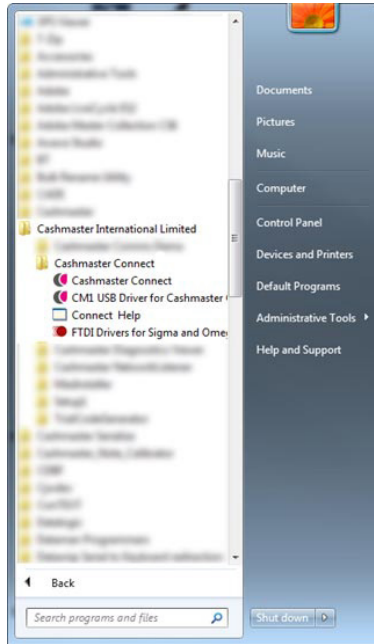
1.11 The driver installation process will begin.



1.12 After a few moments, the driver installation will complete – click 'Close' to finish:



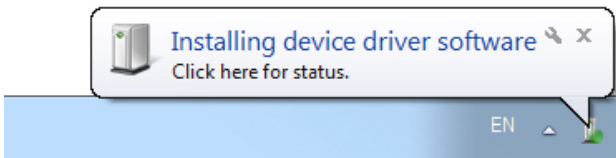
1.13 A Cashmaster Connect shortcut icon will be created on your desktop and added to the Start Menu (Tile screen on Windows 8/8.1):



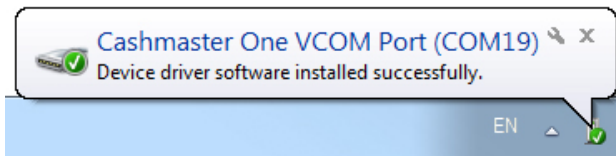
2 Connecting your Cashmaster One product

- 2.1 Insert the USB 'B' (square) connector into the USB 'B' port on the rear of the Cashmaster product – do not switch your Cashmaster product on yet.
- 2.2 Insert the opposite end of the USB cable into any free USB port on your PC/ laptop.
- 2.3 Now switch on your Cashmaster product.

Windows will show the following message while the drivers for the Cashmaster product are initialised:



- 2.4 Windows will display the following message when the driver initialisation is complete:



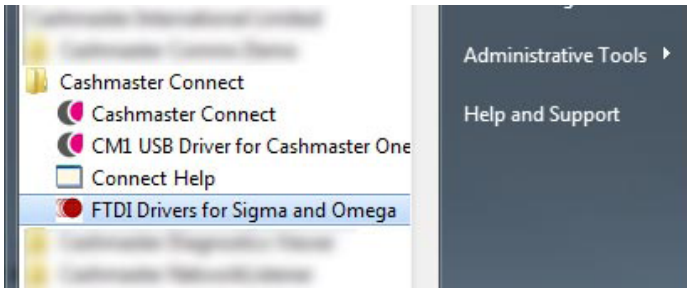
- 2.5 You are now ready to run Cashmaster Connect for the first time!

3 Connecting your legacy Cashmaster Sigma or Omega product



Please do not connect your Cashmaster product to your PC until you have completed the following installation steps.

3.1

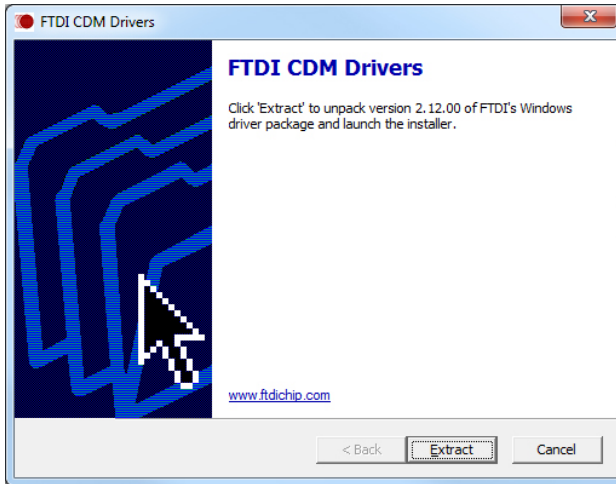


Once you have installed Cashmaster Connect, run the FTDI driver installer from the Cashmaster Connect Start Menu folder.

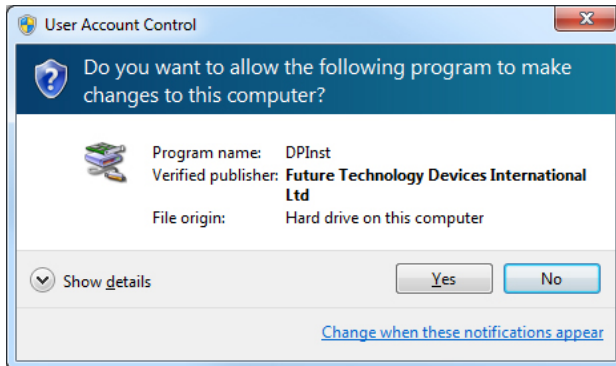
Notice

The FTDI driver installer requires administrator privileges – contact your system administrator if you do not have administrator-level user rights on your PC.

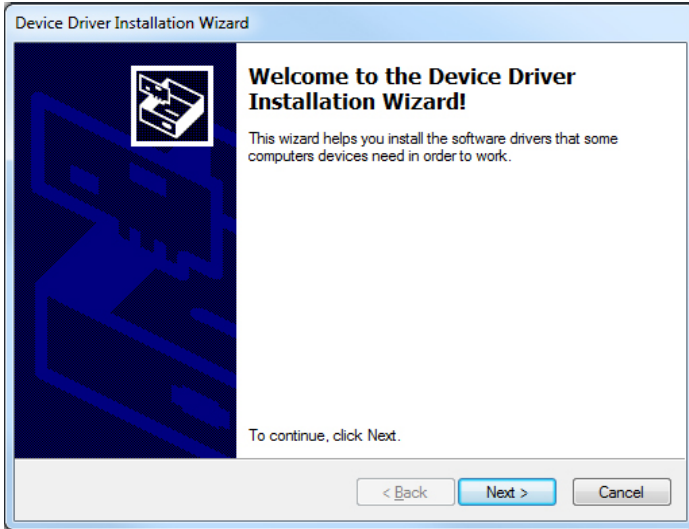
3.2 Click 'Extract' to continue:



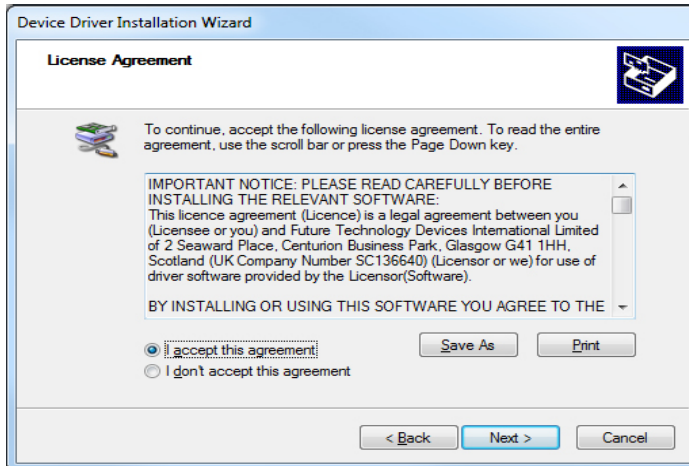
3.3 The Windows 'UAC' dialogue may appear. Click 'Yes' to continue.



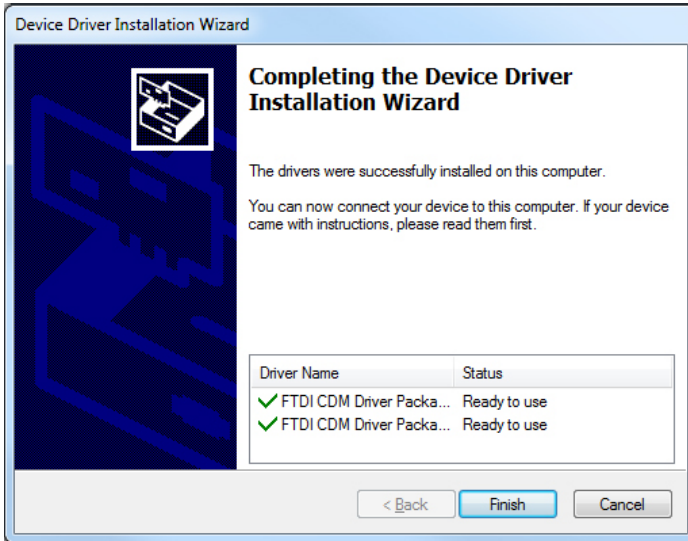
3.4 Click 'Next' to begin the installation.



3.5 Accept the standard license agreement to continue.

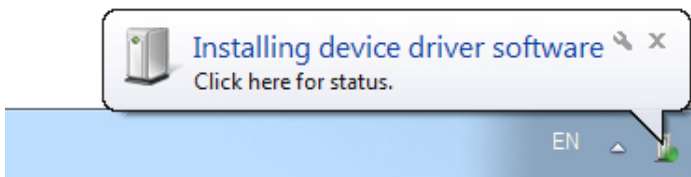


- 3.6** After a few moments, the installation of the 'FTDI CDM Drivers' will complete – click 'Finish' to exit.

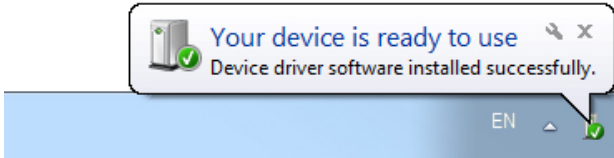


- 3.7** Insert the USB 'B' (square) connector into the USB 'B' port on the rear of the Cashmaster Sigma or Omega product – do not switch your Cashmaster product on yet.
- 3.8** Insert the opposite end of the USB cable into any free USB port on your PC/ laptop.
- 3.9** Now switch on your Cashmaster product.

Windows will show the following message while the drivers for the Cashmaster product are initialised:



3.10 Windows will display the following message when the driver initialisation is complete:



You are now ready to run Cashmaster Connect for the first time!

4 Global support

- **North America**
t: +1 877 227 4627
e: enquiriesusa@cashmaster.com
- **Hong Kong and Asia**
t: +852 2157 9363
e: enquiriesasia@cashmaster.com
- **Germany**
t: +49 (0) 2463 999 339
e: germany@cashmaster.com
- **UK and all other customers**
t: +44 (0) 1383 410 121
e: support@cashmaster.com



cashmaster.com